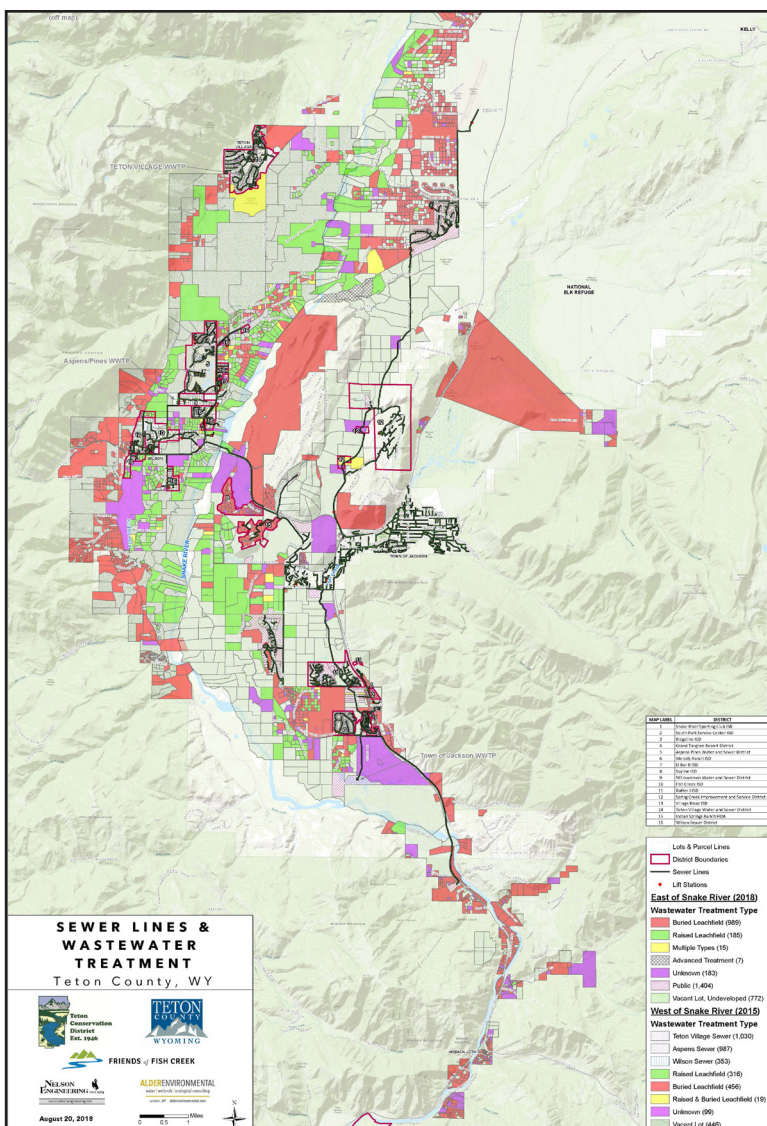




SPRING 2019

Where Does Your Wastewater Go?

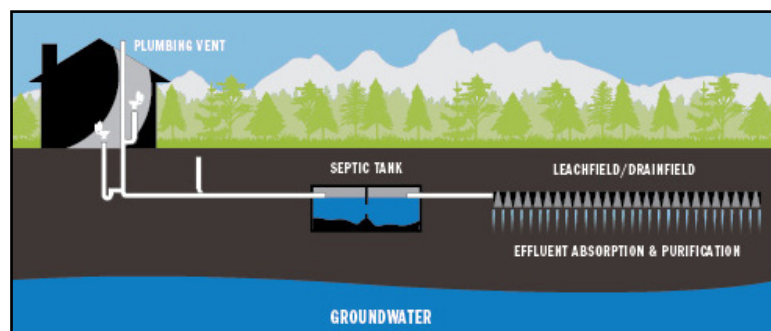
Human activities such as agriculture, lawn fertilization, and sewage treatment can lead to high levels of nutrients in ground and surface water. For the first time, all the septic and sewer systems in the most densely developed parts of Teton County have been mapped. Teton Conservation District, Teton County, and Friends of Fish Creek created the Septic and Sewer map as a tool for community planners as they work towards improving water quality in Jackson Hole. You can check out the map in more detail on our website at www.tetonconservation.org.



Well Test and Septic Pumping Cost Shares

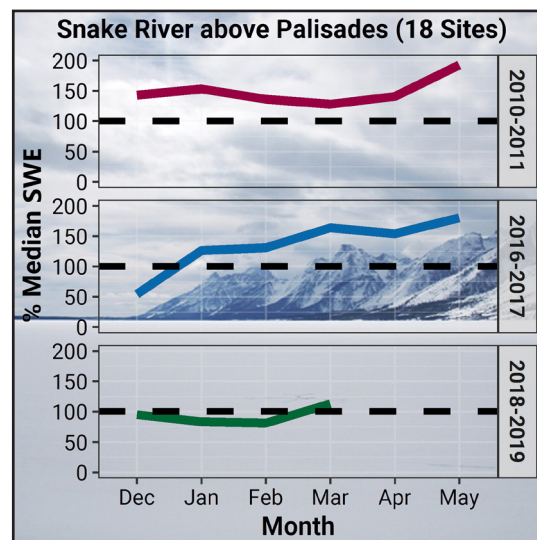
This is the last year you can get a 50% (up to \$150) cost share on septic system pumping through Teton Conservation District and Friends of Fish Creek. Enrollment begins on April 1st. Please contact us for more information at (307) 733-2110 or info@tetonconservation.org.

If you're on a private well, spring is a good time to test your drinking water. You can pick up a test kit at our office for \$50.



Late Winter Snowpack Stats

February was one of the snowiest months on record, but as of March 1st, there was actually less water stored in our snowpack compared to the same time of year in 2011 and 2017, both of which were big runoff years. This plot compares this year's snow water equivalent (the amount of water remaining if you were to melt the snow) compared to historical data. As of February 28th, the snow water equivalent at a combined 18 different SNOTEL sites above Palisades indicate that the watershed is at 113% of median snow water equivalent (illustrated by the black dashed line). Data from the NRCS National Water and Climate Center.



Technical Assistance Cost Share Grantees Announced

The Teton Conservation District Board awarded a total of \$118,245 to the following projects during the February 2019 Technical Assistance Cost Share Grant cycle.

Jackson Hole Trout Unlimited is working to restore a section of Bar BC Spring Creek to improve aquatic and wetland habitat and ensure cutthroat trout passage to the Gros Ventre and Snake River.



Boise State University is replacing 32 conventional street lights in the Colter Bay Village with ecologically friendly LED red lights that emit

longer wavelengths to study light interference with bat and insect ecology.

Jackson Hole Conservation Alliance is bringing Terry McGuire, a wildlife crossing engineer, to Jackson to speak about his work building successful wildlife crossing structures in Canada.

Northern Rockies Conservation Cooperative hosted the 7th Jackson Hole Wildlife Symposium. The District sponsored the event and three staff members gave talks.

Grand Teton National Park Foundation and Grand Teton National Park are collaborating to restore native wildlife habitat in the Kelly Hayfields area. Teton Conservation District has supported this effort in past years and granted funds to support native seed propagation this year.

Teton Integrated Solid Waste and Recycling is installing a new water supply system that will provide water for revegetation, composting, fire suppression, and other water needs.

WyoFarm Composting is implementing an aerated static pile compost pilot project that will be more efficient, prevent ground and surface water pollution, and attract fewer pests.

Slow Food in the Tetons was awarded funding for their Youth Farming and Cooking Camp and their first Farm to Fork Festival, which will take place on October 5th, 2019 on the Center for the Arts lawn.



Courtesy of WyoFarm Composting.

November Election Results

Teton Conservation District is proud that in November 2018, 83% of local voters passed the Conservation District Tax, a property tax that provides the conservation district with most of its funding. The board and staff are encouraged by the overwhelming support and look forward to providing valuable services to the community.



Elyce and Phoebe performing some serious science.

The district welcomed two new board members. **Nate Fuller** and **Steve McDonald**, both Wyoming natives, joined incumbent board members **Dave Adams**, **Baily Schreiber**, and **Bob Lucas**. Nate is a third generation Jackson resident and ranch manager of the Huidekoper Ranch. Steve, a resident of Alta, worked as an engineer in the energy industry for 37 years. The district thanks outgoing board members **Sandy Shuptrine** and **Steve Kallin** for their service to the community.

Elyce Gosselin joined the staff as Natural Resources Technician. Originally from Boise, Elyce has a B.S. in Ecology and Conservation Biology and a B.S. in Mathematical Biology. **Phoebe Coburn** joined the staff as Communications Specialist. She grew up in Jackson and has a M.A. in Public Administration.

Native Species Spotlight

Brewer's sparrows will bring the sound of spring with them when they migrate back to Jackson in April and May. For a tiny inconspicuous bird, they have a long trilling song. Roger Tory Peterson once likened them to "a Chipping Sparrow trying to sing like a canary." They are a sagebrush-obligate species, meaning they depend on sagebrush habitat. Their populations declined by nearly half between 1966 and 2014, according to the North American Breeding Bird Survey.



A Brewer's sparrow perched on a sagebrush. Photo by Tom Koerner/USFWS.